

KRACHT FOKUS

ATEX-Products

Explosion protection according to
Guideline(s) 94/9/EG (ATEX 95)

This directive sets up the rules for putting products into circulation which are used in potentially explosive atmospheres or contain explosive atmospheres.

The ATEX 100a is intended for the manufacturer resp. persons putting equipments, components, protection systems as well as safety, checking and control devices in potentially explosive atmospheres into circulation – similarly to the EG Machinery Directive. Thereby the national regulations were given up in favour of a uniform and high safety standard.

Permissible materials:

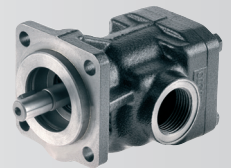
Mineral oil according to DIN 51524/25

Motor oil according to DIN 51511

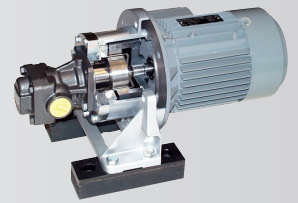
(Additional products and materials upon request)



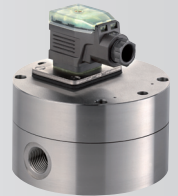
Transfer Gear Pumps KF



Transfer Gear Pumps KF
with Magnetic Coupling*



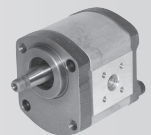
Gear Type Flow Meters VC



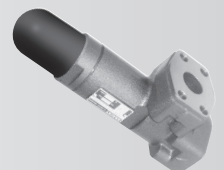
High Pressure Gear Pumps KP



High Pressure Gear Motors KM



Pressure Relief Valves



KRACHT GmbH

Gewerbestr. 20
D-58791 Werdohl

fon +49 (0) 2392/935- 0

fax +49 (0) 2392/935-209

mail info@kracht.eu

web www.kracht.eu

* Temperature monitoring of the Split case is required.