

KRACHT FOKUS

Gear Pump Units

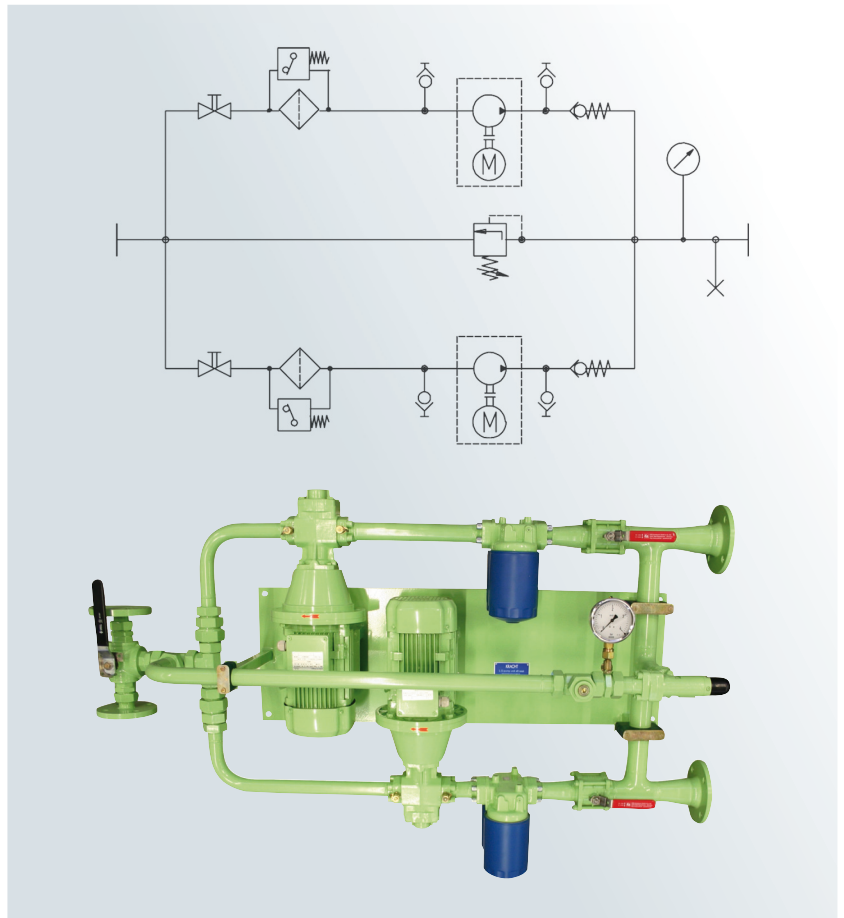


The KRACHT Gear Pump Units are used for propulsion systems and lubrication of bearings on container vessels.

Due to innovative construction and the use of high quality products the units are designed for hardest conditions.

Components

E-motor	0.44–3.0 kW
Gear Pump	up to 150°C
Filtration	suction and pressure side
Pressure relief valve	SPV



Installation sample: Construction Gear Pump Unit (State of the drawing 08/08)

Contacts for Offshore Hydraulic:

Mr. Ingo Salewski
fon +49(0)2392.935-273
mail salewski@kracht.eu

Mr. Oliver Paßolat
fon +49(0)2392.935-274
mail passolat@kracht.eu

Generally-Offshore Hydraulic
fax +49(0)2392.935-279
mail mobilhydraulik@kracht.eu

KRACHT GmbH · Gewerbestraße 20 · D-58791 Werdohl
fon +49.(0)2392.9350 · fax +49.(0)2392.935-209
mail info@kracht.eu · web www.kracht.eu