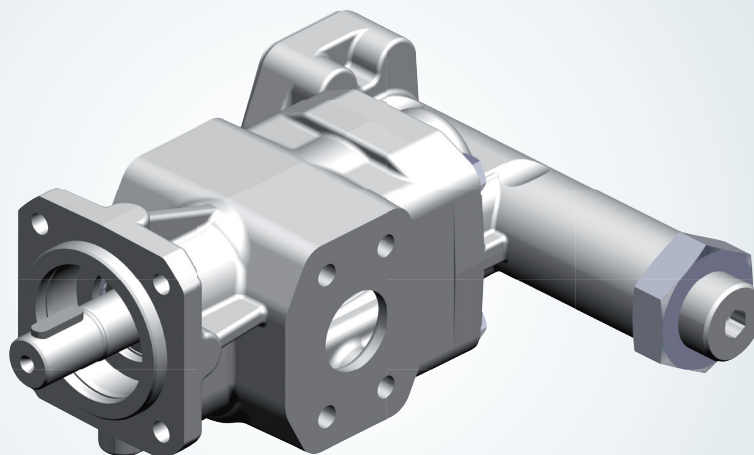


Transfer Gear Pumps KF 32 ... 80 with T-Valve

($Q_{\max} = \dots 235 \text{ l/min}$)



TRANSFER PUMPS

KF 32 ... 80 with T-Valve

The T-valve is a pressure relief valve that is mounted directly to the KF-pump. The special feature of the valve is that it has a separate tank connection. The valve characteristic has been selected in such a way that a constant system pressure setting is possible. The design characteristics allow the use in potentially explosive areas in accordance with the ATEX guideline 94/4/EG (ATEX 95).



CHARACTERISTICS

- › Less heat development
- › Checking of the oil quantity drained
- › Flat characteristic curve and extremely stable characteristics
- › Less piping work compared with externally piped pressure relief valves
- › ATEX-Design

VERSIONS

- › T 15 (p = 5 up to 15 bar)
- › T 25 (p = 15 up to 25 bar)

VISCOSITY RANGE

12 ... 5000 mm²/s

ATEX-MARKING

⊕ II 2G ck IIC TX